

15th August 2018

Yala 2018
Volume 03



Inside this issue:

Paddy	1
OFC	5
Vegetables	7

Over view

Paddy

- Sown extent as at end July 2018 is 378,826 ha.
- Expected paddy production is 1.49million mt.

OFC

- Cultivation progress of OFC 37,272ha, that is 46% from the target.

Vegetables

- Up country vegetables cultivation progress 8,504 ha that is 61% from the target
- Low country vegetables cultivation progress 18,498 ha that is 72% from the target.

Paddy

Cultivation Progress

- Paddy cultivation progress as at end July 2018 is 378,826 ha; 90% of the target (422,978 ha) (Table 1)
- When compared with the average sown extent of last 3 Yala seasons, the reported cultivation progress is approximately same

Paddy Production

Paddy production forecast based on the reported sown extent as at end July 2018 is 1.49million mt considering the damages too (Table 1 & figure 1)

Crop Damages

- Crop damages reported mainly due to Pest damage from Ampara district. Flood damages reported from Puttalam. district begging of the season. The total affected extent is 4,605 ha (Table 1 & Figure 5).

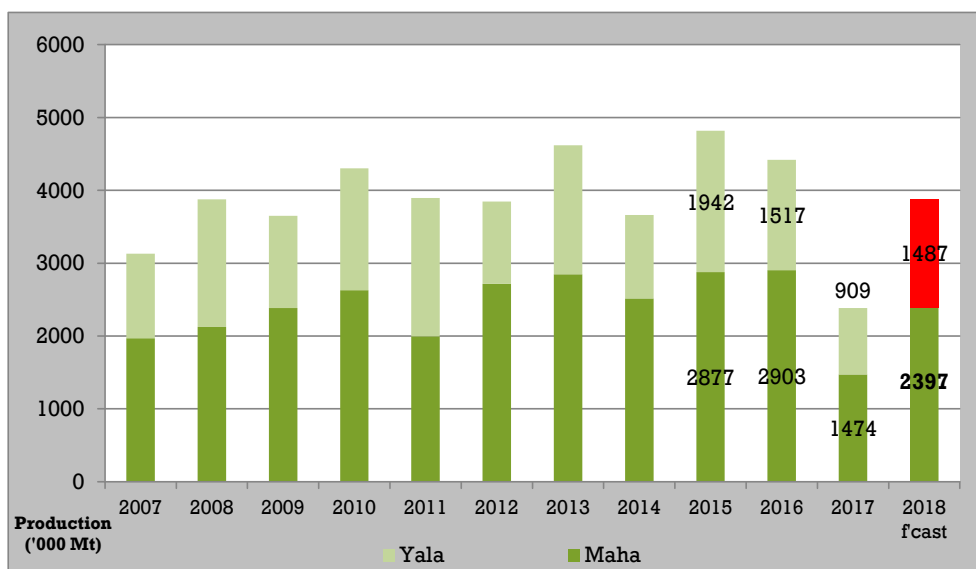


Figure 1: Paddy : Trend in paddy production Maha & Yala seasons

Table 1: Paddy Target, sown extent as at end July 2018 and production forecast of Yala 2018 (based on progress)

District	Area Targeted (ha)	Achievement (ha)	Cultivation Progress as a % from target	Production Forecast based on the progress (Mt)	Damaged extent (ha) due to & Flood				Pest		Total affected extent (ha)	Expected production loss from affected area (mt)	Revised production forecast (Mt)
					100%	75%	50%	25%	75%	25%			
Colombo	1,905	1,100	58	3,205	-	-	-	-	-	-	-	0	3,205
Gampaha	4,908	6,267	128	19,145	-	-	-	-	-	-	-	0	19,145
Kalutara	7,500	6,254	83	20,321	97.6	66.5	50.5	7.8	-	-	222	567	19,754
Galle	8,828	3,413	39	9,122	-	-	-	-	-	-	-	0	9,122
Matara	14,780	12,292	83	41,746	7.6	-	3.9	4.0	-	-	16	36	41,710
Ratnapura	8,450	7,085	84	23,081	-	-	-	-	-	-	-	0	23,081
Kegalle	9,268	5,925	64	21,806	5.0	10.0	30.5	149.0	-	-	195	239	21,567
Kurunagala	65,611	46,740	71	186,958	83.0	-	-	-	-	-	83	332	186,626
Puttalam	18,305	12,622	69	37,550	-	555.8	-	-	-	-	556	1240	36,310
Kandy	6,884	6,179	90	19,897	-	-	14.0	-	-	-	14	23	19,875
Matale	10,343	9,109	88	37,096	-	-	-	-	-	-	-	0	37,096
Neliya	3,029	1,993	66	4,264	-	-	-	-	-	-	-	0	4,264
Badulla	7,092	8,025	113	30,617	-	-	-	-	-	-	-	0	30,617
Monaragala	17,161	20,593	120	76,688	-	-	-	-	-	-	-	0	76,688
Jaffna	-	-	-	-	-	-	-	-	-	-	-	0	-
Kilinochchi	7,175	754	11	2,602	-	-	-	-	-	-	-	0	2,602
Vavuniya	7,454	780	10	2,943	-	-	-	-	-	-	-	0	2,943
Mullative	5,268	1,638	31	5,103	-	-	-	-	-	-	-	0	5,103
Mannar	2,930	600	20	2,693	-	-	-	-	-	-	-	0	2,693
Anuradhapura	27,036	13,217	49	48,886	-	-	-	-	-	-	-	0	48,886
Polonnaruwa	31,242	31,243	100	127,131	-	-	-	-	-	-	-	0	127,131
Trincomalee	16,646	16,341	98	67,802	-	-	-	-	-	-	-	0	67,802
Batticaloa	25,814	25,806	100	62,437	-	-	-	-	-	-	-	0	62,437
Ampara	33,826	34,572	102	146,765	35.0	117.0	765.0	2,603.1	-	-	3,520	4907	141,857
Hambantota	26,567	25,320	95	123,919	-	-	-	-	-	-	-	0	123,919
Udawalawa	10,415	10,487	101	50,810	-	-	-	-	-	-	-	0	50,810
System H	12,747	15,590	122	71,090	-	-	-	-	-	-	-	0	71,090
System H1	1,600	7,415	463	33,812	-	-	-	-	-	-	-	0	33,812
System B	14,320	19,606	137	89,403	-	-	-	-	-	-	-	0	89,403
System C	11,203	21,693	194	98,920	-	-	-	-	-	-	-	0	98,920
System G	3,240	4,754	147	21,678	-	-	-	-	-	-	-	0	21,678
System L	75	132	176	602	-	-	-	-	-	-	-	0	602
System D	477	487	102	2,221	-	-	-	-	-	-	-	0	2,221
Rambakanoya	878	798	91	3,639	-	-	-	-	-	-	-	0	3,639
Sri Lanka	422,978	378,826	90	1,493,951	228	749	864	2,764	864	2,764	4,605	7,345	1,486,607

Note: Polonnaruwa district : Data represents only the area of Deputy Director of Agriculture (Inter province) - Polonnaruwa

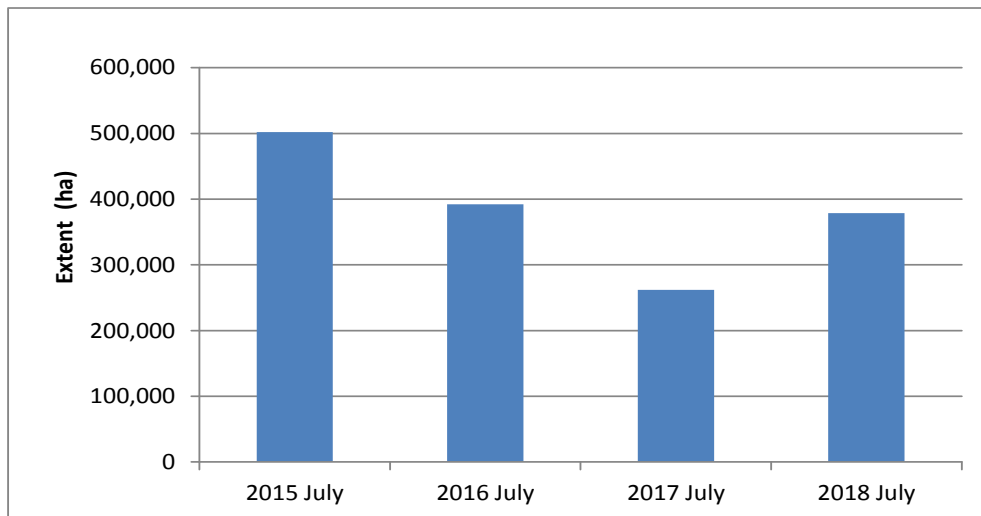


Figure 2: Paddy cultivation progress up to end July 2015, 2016, 2017 & 2018

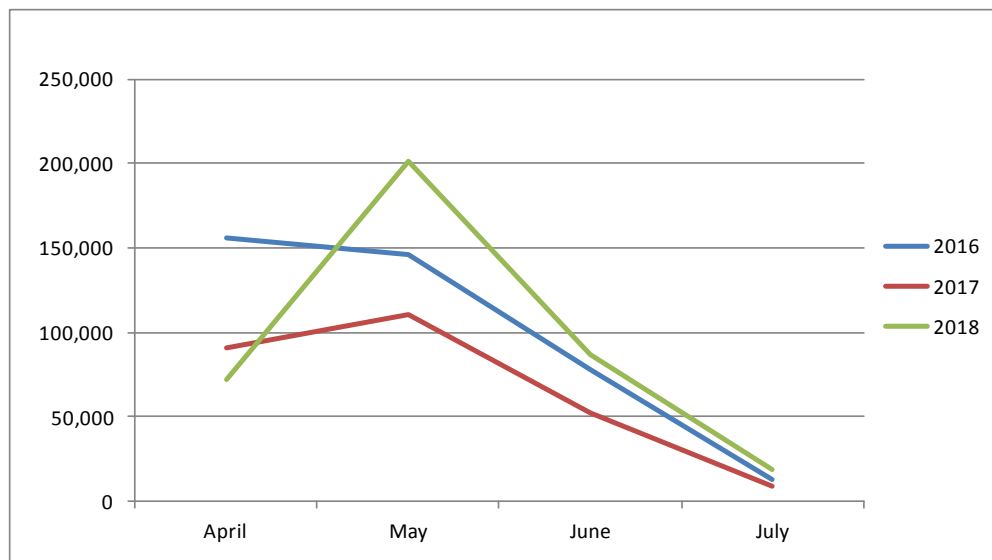


Figure 3: Paddy : Monthly cultivation extents (ha) in Yala seasons 2016,, 2017 & 2018

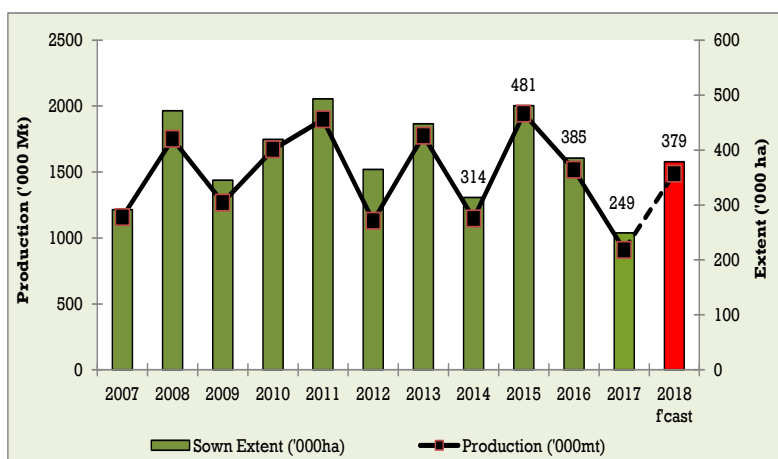


Figure 4: Paddy : Trend of paddy extent and production in Yala

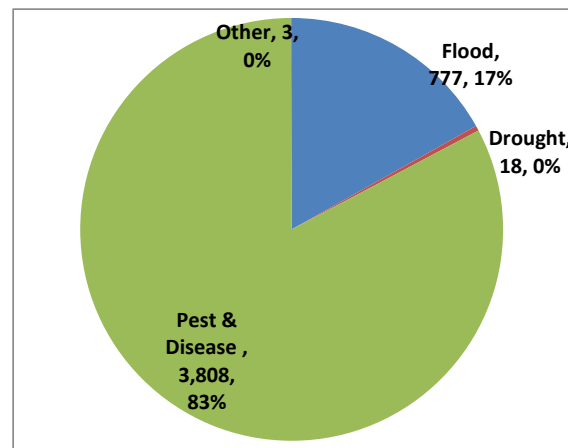


Figure 5: Paddy Crop damages

Table 2: Paddy :Rice availability situation of 2018

<u>Domestic rice production : 2018</u>		
Maha 2017/18		
Maha 2017/18 paddy expected production (DOA Crop Forecast)	million mt	2.40
Seed paddy requirement for Yala 2018 *	million mt	0.04
Wastage	million mt	0.14
Total paddy availability for consumption from Maha 2017/18 production	million mt	2.21
Total rice availability from Maha 2017/18 production	million mt	1.51
Yala 2018		
Yala 2018 expected production (from the reported cultivation extent as at end July 2018)	million mt	1.49
Seed paddy requirement for Maha 2018/19 Cultivation **	million mt	0.07
Wastage	million mt	0.09
Total paddy availability for consumption from Yala 2018 production	million mt	1.33
Total rice availability from Yala 2018 production	million mt	0.90
Total paddy availability for year 2018	million mt	3.88
Total rice availability for year 2018	million mt	2.41
<u>Rice consumption/ Requirement /Usage : 2018</u>		
Household rice per capita consumption	Kg/year/person	107.0
Population 2018	number	21,679,884
Total rice requirement	million mt	2.32
Per month national rice requirement	mt	193,262
Surplus of rice - year 2018	mt	89,118
Per capita rice availability - year 2018	Kg/year	111
Self sufficiency ratio	%	104
Months can be fed from Maha 2017/18 production		7.79
From January 2018 onwards		Mid August 2018
Months can be fed from yala 2018 expected production		4.67
From Mid August 2018 onwards		End December 2018
Months can be fed from domestic rice production - year 2018		12.46
Assumptions		
Seed Paddy requirement for Yala 2018 = Average sown extent Yala 15-17 * Seed paddy requirement per ha		
Seed paddy requirement for Maha 2018/19 = Average sown extent Maha 12/13-17/18 ** Seed paddy requirement per ha		
Seed paddy requiremnt per ha = 102.35 kg		
Wastage = 6% from paddy production		
No use for animal feed and manufacturing		
No rice imports & exports during 2018		
Two months paddy stocks bring forward from year 2016		
Rice usage for rice based value added products, hotels, hospitals etc... are not considered for calculating national rice requirement.		
Sources:		
Household rice per capita consumption - Household Income and Expenditure Survey 2016, Department of Census and Statistics		
Population 2018 & population growth rate - Central Bank report 2017		

Other Field Crops

Table 3: OFC: Targets and cultivation extents as at end July 2018 of Yala 2018 season

Crop	Yala 2018				Yala 2017		Expected production as a % from the production of Yala 2017	Extent achieved as a % of cultivated extent in Yala 2017
	Target (ha)	Achievement (ha)	Expected production from the achievement (mt)	% Achievement in extent from the target	Extent (ha)	Production (mt)		
Potato	3,062	1,782	29,175	58	2,718	44,977	65	66
Red Onion	4,119	2,245	27,546	54	1,872	24,340	113	120
Big Onion	5,249	1471	25,925	28	2,738	50,377	51	54
Green Chilli	5,084	3,796	17,780	75	4,301	21,137	84	88
Finger millet	2,142	544	1,565	25	765	1,106	142	71
Maize	14,945	7,815	30,200	52	8,029	32,011	94	97
Soya bean	5,267	1351	2,301	26	5,221	9,156	25	26
Green Gram	9,417	2,405	3,235	26	3,310	4,496	72	73
Cow pea	8,563	3,102	4,665	36	2,806	3,639	128	111
Black gram	1,319	341	330	26	2,012	2,082	16	17
Gingelly	15,332	7,255	5,885	47	6,601	5,700	103	110
Ground nut	6,751	5,166	9,921	77	4,540	8,323	119	114
Total	81,250	37,272	158,527	46	44,913	207,344	76	83

- Cultivation Progress of all OFC's Up to end July 2018 is 37,272 ha 46% of the target (Table 3)
- All the OFC's crops shows lower cultivation progress from the target
- Ground nut and Green chili cultivation progress is reported the highest progress among the OFC's crops.
- Finger millet, Soya bean, Green gram, Black gram and Big Onion crops cultivation progress less than 30% of the target

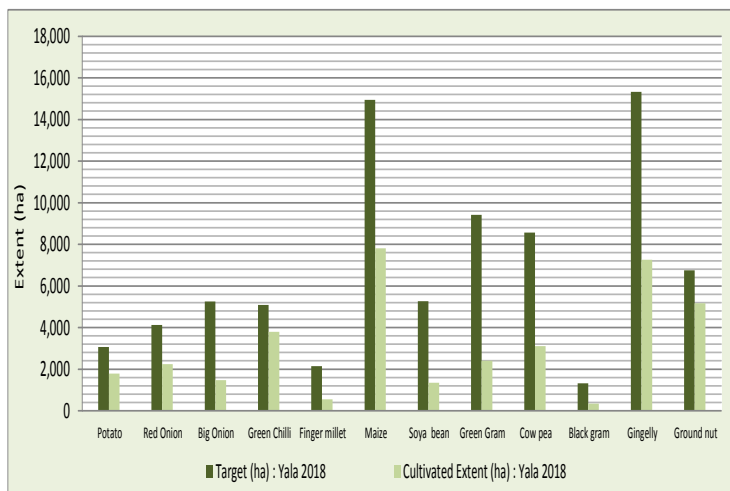


Figure 6 OFC: Target & progress as at end July in Yala 2018.

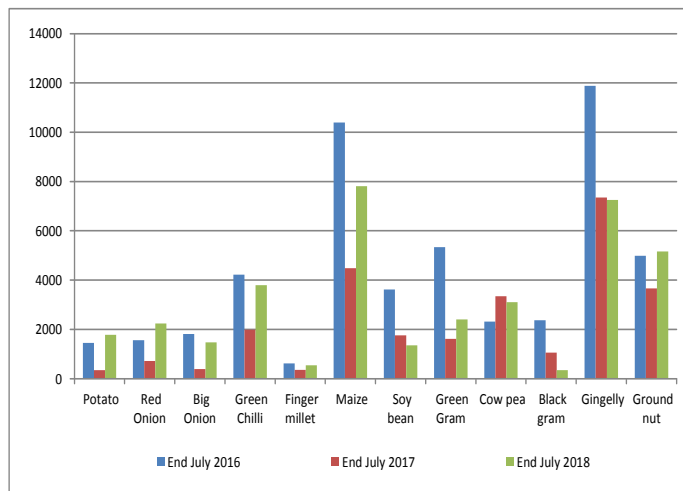


Figure 7: OFC: Cultivation progress (ha) as at end July in Yala 2016, 2017 & 2018.

Vegetables

Table 4 :Vegetables: Target & cultivated extent as at end July 2018: Yala 2018

Crop	Target Yala 2018 (ha)	Cultivation Progress as at end July 2018 (ha)	Expected Pdn. Yala 2018 (mt)	% Progress from the target
Up-Country Vegetables				
Bean	4,188	2292	25,174	55
Beet	1,325	731	13,709	55
Cabbage	2,087	1261	32,133	60
Capsicum	2,065	1211	8,962	59
Carrot	1,443	995	13,149	69
Knol-Khol	507	442	5,898	87
Leeks	851	709	17,318	83
Radish	1,525	862	15,338	56
Total	13,991	8,504	131,681	61
Low-Country Vegetables				
Red Pumpkin	3,802	2273	31,435	60
Snake gourd	1,735	1169	14,181	67
Tomato	2,858	2038	29,580	71
Cucumber	1,290	1076	12,147	83
Bitter gourd	2,137	1370	16,284	64
Okra	2,841	2385	21,545	84
Brinjal	3,955	3018	33,648	76
Ash plantain	517	459	5,794	89
Luffa	1,600	1018	10,829	64
Mae	3,886	2796		72
Winged bean	458	452		99
Kakiri	448	272		61
Total	25,712	18,498	175,444	72
Grand Total	39,703	27,002	307,125	68

- Cultivation target of all vegetables is 39,610 ha and the progress achieved up to end July 2018 is 27,002 ha; that is 68% of the target. The reported cultivation progress of (Table 4).
- The reported cultivation progress of up country vegetables and low country vegetables are 61% and 72% from their targets respectively.
- Highest cultivation extent reported from brinjal, followed by Mae, Okra, Bean respectively.

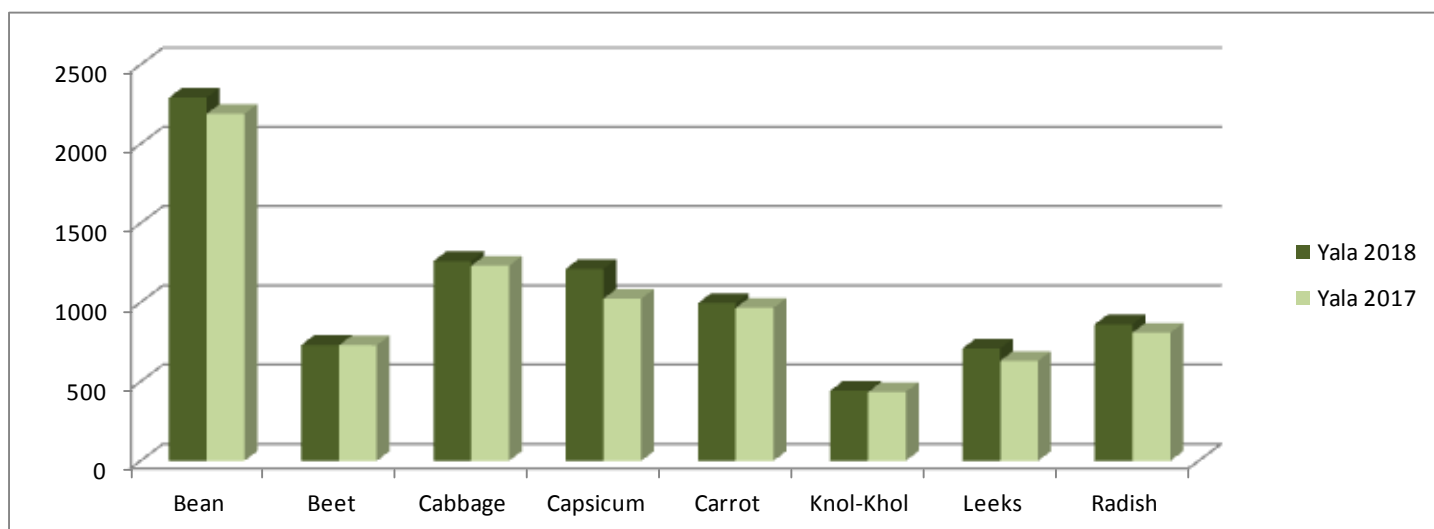


Figure 8: Up-Country Vegetables: Cultivation progress (ha) as at end July in Yala 2017 & 2018.

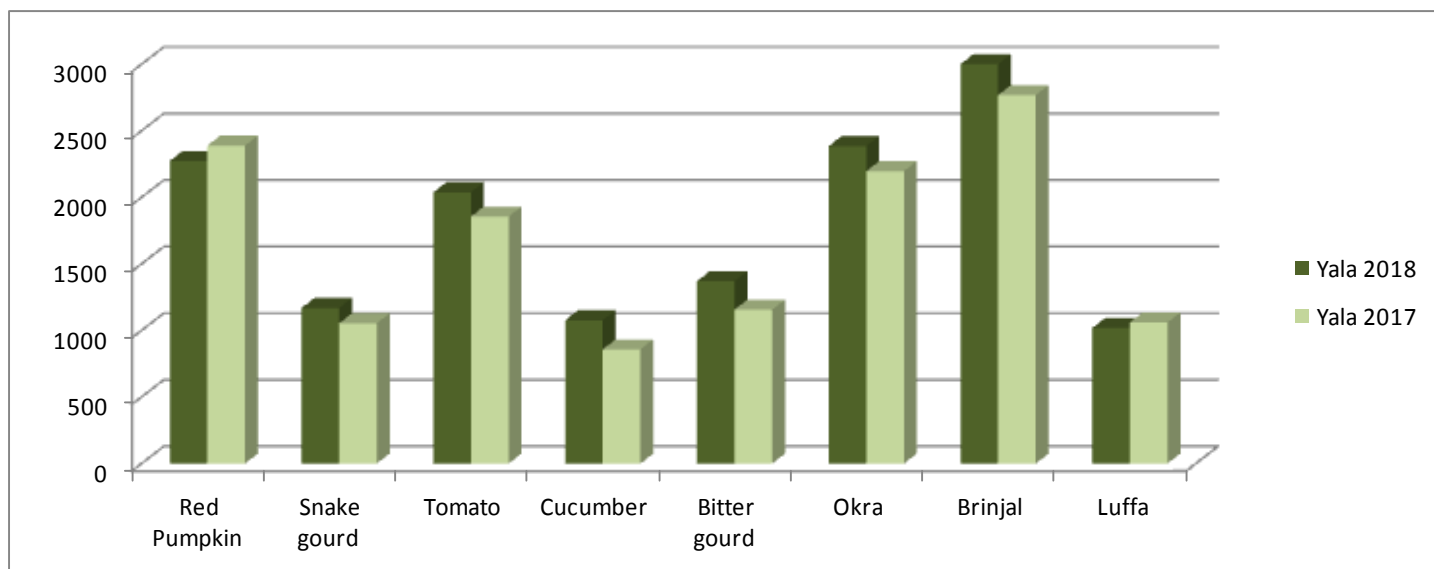


Figure 9: Low-Country Vegetables: Cultivation progress (ha) as at end July in Yala 2017 & 2018.

Annexure Tables

Table A-1: Other field crops; Target & cultivated extent up to end July 2018: Yala 2018

District	Green Chilli			Big Onion			Red onion			Potato			Maize			Soya bean			Finger millet			
	Target (ha)	Achievement (ha)	Est. Prod. (mt)	Target (ha)	Achievement (ha)	Est. Prod. (mt)	Target (ha)	Achievement (ha)	Est. Prod. (mt)	Target (ha)	Achievement (ha)	Est. Prod. (mt)	Target (ha)	Achievement (ha)	Est. total Prod. (mt)	Target (ha)	Achievement (ha)	Est. Prod. (mt)	Target (ha)	Achievement (ha)	Est. Prod. (mt)	
Colombo	43	15	48	0	0.0	0	0	0	0	0	0	0	0	0	0	0	0	0	0	0	0	0
Gampaha	60	46	108	0	0.0	0	0	0	0	0	0	0	0	0	0	0	0	0	0	0	0	0
Kaluthara	51	79	338	0	0.0	0	0	0	0	0	0	0	0	0	0	0	0	0	0	0	0	0
Kandy	262	145	697	0	0.0	0	6	5	52	2	0	0	380	162	618	0	0	0	21	1	1	1
Matale	165	250	1302	2092	693.3	15508	0	0	0	0	0	233	237	810	80	175	339	29	3	7	7	
Nuwara-Eliya	154	77	230	0	0.0	0	36	8	65	915	510	9337	301	62	148	0	2	2	248	22	29	29
Galle	47	45	158	0	0.0	0	0	0	0	0	0	0	0	0	0	0	0	0	0	0	0	0
Matara	40	38	139	0	0.0	0	0	0	0	0	0	6	1	2	0	0	0	2	0	0	0	0
Hambantota	148	211	958	1	0.0	0	20	8	65	0	0	0	188	146	326	0	0	0	61	53	70	70
Jaffna	42	58	132	40	0.2	2	2005	1134	12219	0	0	0	10	23	44	0	0	0.0	148	27	36	36
Kilinochchi	107	90	120	13	7.5	70	100	65	664	0	0	0	30	17	55	0	0	0	10	2	2	2
Mannar	145	77	247	50	21.4	243	97	21	194	0	0	0	89	22	53	15	0	0	0	0	0	0
Vavunia	250	205	540	142	65.9	1030	400	234	2631	0	0	0	42	38	134	36	2	0	16	2	2	2
Mullaithivu	200	122	759	54	7.6	139	456	90	1015	0	0	0	91	21	44	50	0	0	8	1	2	2
Batticaloa	263	129	480	1	0.0	0	52	13	113	0	0	0	425	296	1021	0	0	0	0	1	2	2
Ampara	262	132	104	0	4.7	54	0	0	0	0	0	0	398	354	434	50	0	0	0	0	0	0
Trincomalee	170	121	246	82	15.6	0	249	47	364	0	0	0	577	222	617	150	0	0	15	1	5	5
Kurunagala	413	190	663	22	24.1	397	19	7	53	0	0	0	905	112	303	0	0	0	250	12	15	15
Puttalam	625	440	3789	5	2.2	0	500	521	9390	0	0	0	120	105	421	0	0	0	16	0	0	0
Anuradhapura	652	255	1341	1141	156.5	2341	15	2	0	0	0	0	716	258	910	837	34	70	56	11	12	12
Polonnaruwa	32	11	56	51	6.9	97	0	0	0	0	0	0	170	47	115	0	0	0	14	1	1	1
Badulla	229	166	336	1	0.0	0	4	2	12	2145	1272	19838	3903	2627	10921	4	0	0	48	35	55	55
Monaragala	290	475	3122	0	0.0	0	87	64	521	0	0	0	1623	1726	9525	151	1	1	278	239	329	329
Rathnapura	92	103	437	10	0.0	0	58	23	187	0	0	0	159	206	409	0	0	0	75	56	74	74
Kegalle	49	33	75	0	0.0	0	0	0	0	0	0	0	70	27	61	0	0	0	0	0	0	0
System H	50	52	251	250	44.0	571	2	0	0	0	0	0	500	403	1175	3500	1025	1702	25	19	27	27
System H1	71	48	232	914	355.0	4608	0	0	0	0	0	0	224	83	242	350	113	188	5	5	5	5
Udawalawa	0	131	632	0	0.0	0	0	1	0	0	0	0	197	326	951	0	0	0	39	48	42	42
System B	0	5	23	21	1.0	13	0	0	0	0	0	0	100	60	175	0	0	0	15	0	16	16
System C	13	1	6	5	0.6	8	13	0	0	0	0	0	2500	107	312	13	0	0	750	2	816	816
System G	108	18	87	332	57.0	740	0	0	0	0	0	0	953	84	245	30	0	0	4	0	4	4
System L	50	17	82	23	8.0	104	0	0	0	0	0	0	25	8	23	0	0	0	10	2	11	11
Mahaweli D	5	4	19	0	0.0	0	0	0	0	0	0	0	10	11	32	1	0	0	0	0	0	0
Rambakenoya	0	5	24	0	0.0	0	0	0	0	0	0	0	0	25	73	0	0	0	0	1	0	0
Sri Lanka	5084	3796	17780	5249	1471	25925	4119	2245	27546	3062	1782	29175	14945	7815	30200	5267	1351	2301	2142	544	1565	1565

District	Green gram			Cow pea			Black gram			Gingelly			Ground nut			Manioc			Sweet potato			
	Target (ha)	Achievement (ha)	Est. Prod. (mt)	Target (ha)	Achievement (ha)	Est. Prod. (mt)	Target (ha)	Achievement (ha)	Est. Prod. (mt)	Target (ha)	Achievement (ha)	Est. Prod. (mt)	Target (ha)	Achievement (ha)	Est. Prod. (mt)	Target (ha)	Achievement (ha)	Est. Prod. (mt)	Target (ha)	Achievement (ha)	Est. Prod. (mt)	
Colombo	0	0	0	0	0	0	0	0	0	0	0	0	0	0	0	0	0	0	0	0	0	0
Gampaha	0	0	0	0	0	0	0	0	0	0	0	0	0	0	0	0	0	0	0	0	0	0
Kaluthara	0	0	0	0	0	0	0	0	0	0	0	0	0	0	0	0	0	0	0	0	0	0
Kandy	71	49	67	26	12	20	6	0	4	5	0	13	9	16	182	57	882	17	5	42	42	
Matale	100	110	214	12	13	22	10	4	7	20	3	2	237	44	95	0	2	38	0	14	205	205
Nuwara-Eliya	0	0	0	0	1	1	0	0	0	0	0	0	0	0	0	5	187	0	4	40	40	
Galle	0	0	0	0	0	0	0	0	0	0	0	0	0	0	0	0	0	0	0.00	0	0	0
Matara	40	3	4	0	0	0	0	0	0	0	2	0	0	21	37	52	24	372	20	7	67	67
Hambantota	3457	95	144	60	90	124	0	0	0	150	93	48	84	85	152	118	136	1237	23	18	228	228
Jaffna	62	43	32	20	25	22	0	7	8	0	8	0	40	55	32	130	88	1041	0	0	0	0
Kilinochchi	133	125	125	110	59	70	8	6	5	9	3	7.67	140	144	195	70	65	979	0	0	0	0
Mannar	270	57	56	84	10	12	20	6	7	0	0	0	89	117	181	0	19	366	0	0	0	0
Vavunia	56	37	38	108	52	67	24	16	6	24	84	44	660	541	1105	62	77	935	5	4	55	55
Mullaithivu	182	44	39	230	32	42	0	4	3	0	6	0	970	965	1649	130	79	813	0	8	107	107
Batticaloa	46	33	68	101	125	237	59	73	65	4	4	1	490	416	1278	0	0	0	0	0	0	0
Ampara	416	117	111	4656	1224	1844	0	8	0	0	0	0	279	133	7	0	0	0	0	0	0	0
Trincomalee	148	64	128	43	25	35	83	35	1	30	15	14	223	193	414	108	60	782	26	15	105	105
Kurunagala	743	184	192	410	151	224	237	39	50	123	228	172	775	514	1091	350	123	1302	130	41	297	297
Puttalam	206	53	70	92	128	217	77	13	21	170	202	321	398	269	713	55	172	2683	6	25	282	282
Anuradhapura	207	84	89	177	76	73	132	25	24	13576	5686	4566	125	69	117	0	0	0	0	0	0	0
Polonnaruwa	31	11	17	42	6	8	10	4	5	0	3	4	54	68	183	0	0	0	0	0	0	0
Badulla	114	84	83	105	79	91	28	16	23	25	73	66	48	20	47	3	3	44	3	2	11	11
Monaragala	1459	827	987	766	775	1252	64	30	45	1119	659	470	837	878	1582	0	22	304	0	1	11	11
Rathnapura	209	174	214	50	47	74	5	0	0	75	73	50	372	352	641	0	25	347	0	0	0	0
Kegalle	29	1	2	1	0	0	0	0	0	0	0	0	0	0	0	0	0	0	0	0	0	0
System H	60	12	32	63	22	29	88	10	11	0	5	5	0	42	59	50	90	1077	5	3	31	31
System H1	31	8	21	13	3	4	373	36	39	1	4	4	13	4	6	15	0	0	260	95	994	994
Udawalawa	166	122	323	99	67	89	46	5	5	0	52	56	127	122	173	0	152	1818	0	20	209	209
System B	55	13	34	48	8	11	25	1	1	0	0	0	50	17	24	0	9	108	0	3	31	31
System C	1000	26	69	1100	22	29	0	2	2	0	0	0	50	19	26	0	0	0	0	0	0	0
System G	110	0	0	134	0	0	15	0	0	0	1	1	640	24	34	50	4	48	150	24	251	251
System L	12	13	34	10	16	21	10	2	2	0	44	48	20	15	21	0	0	0	0	0	0	0
Mahaweli D	5	6	16	4	3	4	0	0	0	3	3	3	18	31	44	4	4	48	2	2	21	21
Rambakenoya	0	9	24	0	32	42	0	0	0	0	0	0	0	0	0	0	0	0	0	0	0	0
Sri Lanka	9417	2405	3235	8563	3102	4665	1319	341	330	15332	7255	5885	6751	5166	9921							

Table A-2: Vegetables: Target & cultivated extent up to end July 2018: Yala 2018

DISTRICT	Beans			Beet Root			Cabbage			Capsicum			Carrot			Knolkhol			Leeks			Raddish			Pumpkin			Snake gourd						
	Target (ha)	Achievement (ha)	Est.Pro d. (Mt)	Target (ha)	Achievement (ha)	Est.Pro d. (Mt)	Target (ha)	Achievement (ha)	Est.Pro d. (Mt)	Target (ha)	Achievement (ha)	Est.Pro d. (Mt)	Target (ha)	Achievement (ha)	Est.Pro d. (Mt)	Target (ha)	Achievement (ha)	Est.Pro d. (Mt)	Target (ha)	Achievement (ha)	Est.Pro d. (Mt)	Target (ha)	Achievement (ha)	Est.Pro d. (Mt)	Target (ha)	Achievement (ha)	Est.Pro d. (Mt)	Target (ha)	Achievement (ha)	Est.Pro d. (Mt)				
Colombo	0	0.0	0	0	0.0	0	0	0	0	0	9	5	22	0	0	0	0	0	0	0	0	0	0	12	4.1	24	0	0	0	63	32	471		
Gampaha	0	0.0	0	0	0.0	0	0	0	0	0	35	27	156	0	0	0	0	0	0	0	0	0	0	40	29.1	260	0	0	0	57	41	377		
Kalutara	0	4.8	35	0	0.0	0	0	0	0	0	37	24	178	0	0	0	0	0	0	0	0	0	0	52	31.2	463	0	0	0	104	55	585		
Kandy	672	232.3	2,174	35	4.0	0	346	132	2,268	140	34	402	83	13	168	50	39.0	644	47	14	273	107	30.0	419	47	16	323	86	97	1,366				
Matale	296	162.4	2,184	216	11.7	269	142	84	1,362	134	26	237	0	0	0	0	24.7	308	0	1	7	28	9.5	157	389	114	1,925	99	43	661				
Nuwaraeliya	844	583.9	7,902	409	285.9	5,263	820	496	18,710	155	98	1,203	842	560	7,183	237	222.0	3,536	567	505	14,930	341	165.2	4,065	0	3	78	0	6	56				
Galle	0	0.0	0	0	0.0	0	0	0	0	0	21	20	92	0	0	0	0	0	0	0	0	0	0	59	21.7	165	0	0	0	46	31	265		
Matara	0	0.2	2	0	0.0	0	0	0	0	0	20	15	56	0	0	0	0	0	0	0	0	0	0	130	55.3	840	11	7	100	40	20	198		
Hambantota	1	3.5	26	1	0.0	0	8	0	1	61	41	249	1	0	0	1	0.0	0	0	0	0	0	0	87	71.2	896	334	324	5,244	245	212	3,639		
Jaffna	0	5.8	40	105	61.8	1,009	40	17	228	17	16	111	50	31	324	0	0.0	0	15	4	36	3	0.8	8	90	68	836	46	28	385				
Kilinochchi	0	0.0	0	13	0.0	0	25	4	52	24	22	154	13	3	18	0	0.0	0	0	0	0	0	0	0	0	0	76	56	749	47	25	411		
Mannar	0	0.5	3	6	0.9	2	20	4	50	30	20	176	4	1	4	0	0.0	0	0	0	0	0	0	0	0	0	1.1	0	40	19	360	37	12	214
Vavuniya	0	1.0	7	28	11.4	92	38	20	339	47	39	396	12	5	33	0	0.0	0	0	0	0	0	0	1.1	13	95	70	1,323	40	28	528			
Mullativu	0	0.8	8	35	1.8	68	45	8	115	50	48	455	20	1	8	0	0.0	0	0	0	0	0	0	0	0	0	65	50	2,689	65	38	715		
Batticaloa	0	0.0	0	0	0.0	0	0	0	0	5	14	48	0	0	0	0	0.0	0	0	0	0	0	0	0	0	0	15	26	488	57	54	394		
Ampara	0	3.3	17	0	16.0	130	0	1	2	30	22	227	0	0	0	0	0.0	0	0	0	0	0	0	15	3.2	84	190	131	2,072	85	40	905		
Trincomalee	4	0.0	0	7	0.5	4	1	1	1	27	18	98	3	0	0	2	1.0	0	0	0	0	0	0	8	3.1	8	57	25	314	49	23	245		
Kurunegala	19	4.0	9	52	38.0	632	12	4	16	107	59	288	0	0	27	28.0	245	0	0	0	0	126	101.0	1,395	286	183	2,366	80	47	450				
Puttalam	0	0.1	1	270	257.8	5,542	45	14	480	206	158	1,580	0	0	0	0	0.0	0	0	0	0	0	0	161	119.4	3,938	267	56	839	19	17	189		
Anuradhapura	35	9.2	37	24	2.8	21	22	12	95	174	107	935	0	0	0	2	1.0	6	0	0	0	0	0	6	1.3	8	996	296	3,494	103	70	347		
Polonnaruwa	1	0.5	4	0	0.0	0	0	0	0	16	4	21	0	0	0	0	0.0	0	0	0	0	0	0	0	0	0	26	10	143	13	2	26		
Badulla	1,803	873.5	8,958	108	66.9	655	453	425	7,735	345	111	681	408	379	5,375	157	97.6	1,059	221	186	2,069	192	100.0	1,334	98	70	871	12	8	65				
Moneragala	20	30.5	250	0	0.2	3	3	3	22	210	133	443	0	0	3	0	0.2	1	0	0	2	30	6.8	55	369	355	2,936	80	19	136				
Ratnapura	368	361.6	3,368	7	1.6	19	36	28	867	40	51	315	8	3	34	9	4.9	56	0	0	0	74	64.7	921	88	81	1,157	80	73	1,155				
Kegalle	55	9.1	46	0	0.0	0	8	1	8	22	10	58	0	0	0	1	0.0	0	0	0	0	0	0	33	8.1	70	3	1	10	30	12	99		
Mahaweli H	60	11.0	33	2	0.0	0	7	3	22	50	40	170	0	0	0	2	4.0	25	0	0	0	4	1.0	6	100	97	966	75	27	58				
Mahaweli H I	9	13.0	39	4	0.0	0	17	8	60	40	28	119	0	0	0	17	18.0	6	0	0	0	17	14.0	88	65	35	349	42	12	26				
Mahaweli L	0	1.0	3	3	0.0	0	0	0	0	0	0	0	2	8	0	0	0.0	0	0	0	0	0	0	0	0	0	10	2	20	4	1	2		
Mahaweli B	0	2.0	6	0	0.0	0	0	0	0	4	0	0	0	0	0	0	2.0	12	0	0	0	0	0	0	0	0	5	7	70	8	5	11		
Mahaweli C	1	0.0	0	0	0.0	0	0	0	0	0	0	0	0	0	0	0	0.0	0	0	0	0	0	0	0	0	0	2	35	349	2	0	1		
Mahaweli G	0	0.0	0	0	0.0	0	0	0	0	8	2	8	0	0	0	2	0.0	0	0	0	0	0	2	0.0	0	80	11	110	22	6	13			
Udawalawa	0	7.1	21	0	0.0	0	0	0	0	17	72	0	0	0	0	0	0.0	0	0	0	0	0	0	19.0	119	0	72	717	0	87	188			
Mahaweli D	1	1.0	3	0	0.0	0	0	0	0	1	1	4	0	0	0	0	0.0	0	0	0	0	0	0	0.3	2	1	1	10	1	1	2	2		
Rambakanoya	0	0.0	0	0	0.0	0	0	0	0	0	0	0	0	0	0	0	0.0	0	0	0	0	0	0	0	0	0	53	528	0	0	0	0		
Sri Lanka	4,188	2,292.05	25,174	1,325	731	13,709	2,087	1,261	32,133	2,065	1,211	8,962	1,443	995	13,149	507	442.3	5,898	851	709	17,318	1,525	862	15,338	3,802	2,273	31,435	1,735	1,169	14,181				

DISTRICT	Tomato			Cucumber			Bitter Gourd			Ash plantain			Okra			Brinjal			Luffa			Mae			Winged bean			Kekiri		
	Target (ha)	Achievement (ha)	Est.Pro d. (Mt)	Target (ha)	Achievement (ha)	Est.Pro d. (Mt)	Target (ha)	Achievement (ha)	Est.Pro d. (Mt)	Target (ha)	Achievement (ha)	Est.Pro d. (Mt)	Target (ha)	Achievement (ha)	Est.Pro d. (Mt)	Target (ha)	Achievement (ha)	Est.Pro d. (Mt)	Target (ha)	Achievement (ha)	Est.Pro d. (Mt)	Target (ha)	Achievement (ha)	Est.Pro d. (Mt)	Target (ha)	Achievement (ha)	Est.Pro d. (Mt)	Target (ha)	Achievement (ha)	Est.Pro d. (Mt)
Colombo	0	0.0	0	29	28	334	60	30	443	0	0	0	60	34	299	65	31	389	60	30	283	61	31	1	0	0	0	0	0	0
Gampaha	0	0.0	0	33	24	441	59	37	512	0	0	0	76	59	637	63	46	469	59	41	336	114	86	0	0	0	33	8	0	0
Kalutara	0	1.0	6	36	28	252	85	53	394	0	0	0	120	78	714	99	67	554	96	42	422	170	88	0	8	0	0			
Kandy	449	207.1	3,809	60	14	253	140	80	1,109	6	0	4	120	60	845	166	67	841	112	64	654	115	42	26	6	1	0			
Matale	135	137.2	1,981	110	41	769	94	32	482	0	0	0	124	51	528	142	60	754	115	61	928	56	76	0	46	0	3			
Nuwaraeliya	526	371.8	7,435	0	1	11	0	4	36	0	0	0	0	21	92	0	50	464	0	3	32	0	10	0	2	0	4			
Galle	0	0.0	0	34	19	171	44	32	212	0	0	0	54	38	291	68	44	306	60	26	264	39	37	36	17	0	0			
Matara	25	13.2	116	9	5	53	40	25	262	35	40	284	50	31	248	60	37	330	40	23	243	83	50	30	13	0	0			
Hambantota	114	162.5	1,942	204	261	3,462	250	205	4,306	79	76	1,076	184	196	2,125	320	258	5,633	127	151	2,217	246	275	88	95	3	0			
Jaffna	60	40.5	436	0	0	0	40	40	403	0	0	0	110	64	540	65	58	675	0	0	0	84	64	0	0	0	0			
Kilinochchi	44	31.0	399	0	0	54	34	300	0	0	0	77	53	840	147	112	1,822	0	0	0	85	52	0	0	0	0				
Mannar	35	20.8	223	0	0	0	31	15	199	0	0	0																		

Socio Economics and Planning Centre

Socio Economics and Planning Centre
 Department of Agriculture
 Peradeniya

Phone: 081-2388206
 Fax: 081-2388798
 E-mail: cropforecastsepcdoa@yahoo.com

We're on the Web

www.doa.gov.lk



Crop cultivation extents provided by;

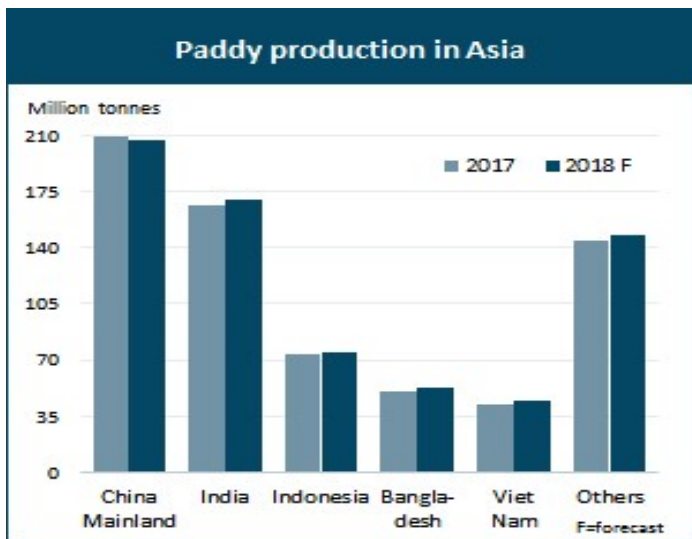
- Provincial Deputy Director of Agriculture Offices
- Inter Province Deputy Director of Agriculture Offices
- Mahaweli Authority

Production Forecasts are made by;

Based on the moving averages of the average yields (source: Department of Census and Statistics) of past 3 years which are verified from Cost of Cultivation reports published by the Socio Economics and Planning Centre, Department of Agriculture and following the observations of field officers.

Preparation

- Mr. N.L. Sudeera (Assistant Director of Agriculture / Agriculture Economics)
- Mr. Nanda Weerasooriya (Information Technology Officer)
- Ms. Anoma Herath (Development Officer)
- Ms. Sanuja Premaratne (Development Officer)
- Ms. Prabodhini Rajakaruna (Development Officer)
- Ms. Nisansala Wijesekara (Development Officer)
- Miss. Rishana Fazy (Development Officer)
- Mr. Madura Abeykoon (Development Officer)



Source : International Rice Research Institute
 FAO Rice Market Monitor, April 2018, Volume XXI - Issue No. 1